

FCI-Standard Nr. 369

CONTINENTAL BULLDOG

FCI-Classification: Group 2

Section 2.1 Molossian type – Mastiff type

created by Ginette Hufschmid and approved by the
Continental Bulldog Club of Switzerland

Illustrated breed standard featuring illustrations of positive
and negative aspects of the breed's appearance

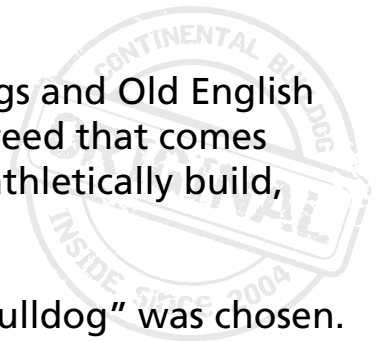
© 2024, updated 2026 Continental Bulldog Club Switzerland



Utilization: Companion dog, Family dog

The goal was to create a medium sized molossoid type dog. The cross-breed with English Bulldogs and Old English Bulldogs showed very soon that the program eventually led to the creation of a new breed, a breed that comes fairly close to the original Bulldog type. This is how the vision of a medium-sized, short-haired, athletically build, resilient companion was realised in the "Conti".

In order to clearly distinguish the new breed from the English Bulldog, the name "Continental Bulldog" was chosen.



CONTINENTAL BULLDOG - FCI-Standard Nr. 369 - illustrated



BREED STANDARD

General appearance:

A smooth coated, almost square, medium-sized bull-type dog of athletic build. Despite his compact body, the Continental Bulldog is active and powerful; his respiration even at full speed is noiseless.



Important proportions:

Height at withers: Depth of chest 2:1

Height at withers: Length of body 1:1.2

Length from the point of insertion of the neck to body up to the base of tail 1:1

His weight, depending on his height is between 20 and 30 kg.

These measurements and proportions are understood as guidelines, decisive factor is always the general impression of the dog, the bulldog-type must be preserved.

Size and weight / depending on the size

Height at the withers: males 42 – 50 cm, females 40 – 48 cm

Weight approx.: males 30 kg, females 25 kg

FAULTS - SEVER FAULTS - DISQUALIFYING FAULTS



too light



too bulky

Disqualifying:

size outside the prescribed dimensions

BREED STANDARD

HEAD



Cranial region: The circumference measured in front of the ears shall not surpass the height at withers by more than 10%. Viewed from front the head appears to be almost square with the zygomatic arch slightly bulging.

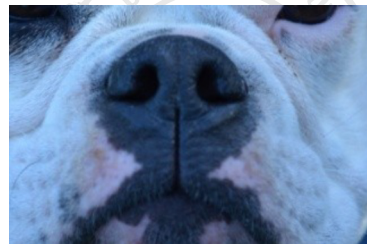
Skull: The forehead is flat to slightly arched, wrinkles existing but not too distinct. From the stop a furrow appears broad but rather flat extending to the middle of the skull.

Stop: distinctive but not too pronounced

Nose: Tip of nose broad. Nostrils big and wide open. Nose always completely black



nostrils very well opened



FAULTS - SEVER FAULTS - DISQUALIFYING FAULTS

Fault: Circumference of head surpasses the height at shoulder by 10 to 20%

Severe fault: Circumference of head surpasses the height at should by more than 20%



too pronounced

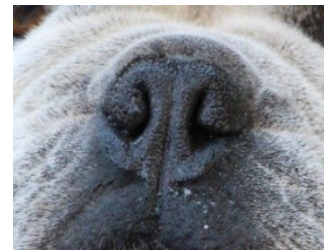


not enough stop



rather large head, too much wrinkles

Fault: too narrow nostrils



nostrils rather narrow



nostrils clearly too narrow!



CONTINENTAL BULLDOG - FCI-Standard Nr. 369 - illustrated



BREED STANDARD

The **muzzle** is broad, viewed from front almost square. Ridge of muzzle is straight, neither turned upwards nor downwards. In relation to the overall length of the head it is 1:3 (tolerance 1:4), Skin folds on both sides of the ridge of muzzle not too thick. Lower jaw including chin is broad and square. Neither tongue nor teeth may be visible when mouth is closed. Distinctive seen from the front underjaw, is not covered by the upper flews.

The **lips** shall be thick, well closed and pigmentation should be black and as complete as possible. Flews of the upper jaw shall be hanging completely over lower jaw at the sides. Flews of the lower jaw as tightly as possible.



Very nice head to nose ratio



approximately square without loss of type



FAULTS - SEVER FAULTS - DISQUALIFYING FAULTS

Fault: too short nose / **Disqualifying:** Ratio length of the nose ridge to head length less than $\frac{1}{4}$



too short nose bridge, too big nose folds and skin folds overlapping line of layback, open or too fleshy lips



too long nose bridge

BREED STANDARD

Jaws/Teeth: Lower jaw projection 1-5 mm, tolerance up to 10 mm, upper and lower teeth must be in straight line and parallel. Strong teeth. 6 regular and well developed incisors placed between the widely set apart canines. The absence of PM1 is permissible, M3 are not taken in consideration. A complete set of teeth is always preferred.

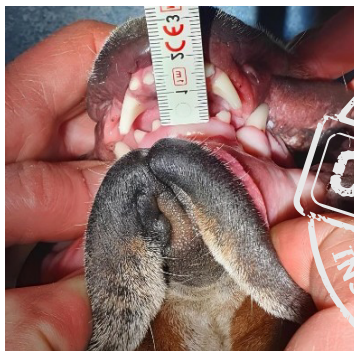
Cheeks: tight and well rounded



1 mm lower jaw projection and optimally straight teeth



perfect dentition with large teeth



Up to 15 mm lower jaw projection allowed



FAULTS - SEVER FAULTS - DISQUALIFYING FAULTS



Undershot too strong



clearly slanted jaw

BREED STANDARD

Eyes: round, quite in front of the head and wide apart, neither sunken nor bulging. The eyelids shall be tightly fitting and as fully pigmented as possible. No white (sclera) may be visible when the dog looks straight ahead. The iris is dark brown.



Well-placed eyes

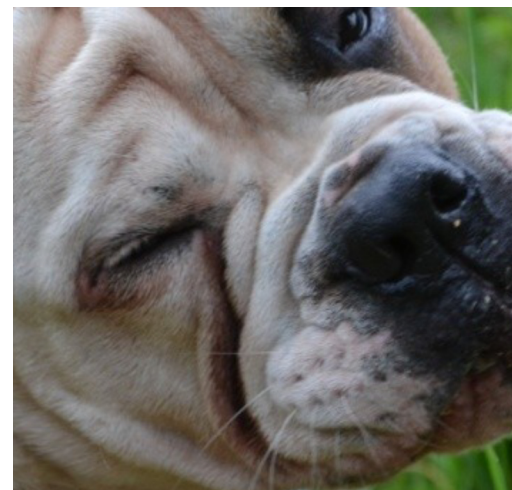


FAULTS - SEVER FAULTS - DISQUALIFYING FAULTS



open, hanging eyelids

Disqualifying faults: entropion, ectropion, blue and/or wall



entropion



ectropion

BREED STANDARD

Ears: set high, small and thin; the front inner edge of each ear forms a straight line with the top line of the skull. Either rose- or folding ear is allowed.

Rose ear: means folded inwards at the back side and laid back; the front part of the edge of ear falls out- and back-wards, the inside of the outer ear is partly visible.

Folding ear: means the ear is more or less in line with the outer corner of the eyes. When resting, the ear is placed closely at the sides of the head.

All other ear forms are to be regarded as fault.



Good folding ears



Rose ears



FAULTS - SEVER FAULTS - DISQUALIFYING FAULTS

Faults: uneven carriage of ears, as well as all other type of ears



Fault: Uneven carriage of ears



disqualifying faults: standing ears

BREED STANDARD

The neck is quite short and strong but not as short as to give the impression that the head sits directly on the shoulders. Well arched neck line. Slight skin folds in the area of the throat are permissible



Elegant neck area



FAULTS - SEVER FAULTS - DISQUALIFYING FAULTS

Fault: too short neck



short neck, head sitting practically directly on the shoulders
too many skin folds on the neck



CONTINENTAL BULLDOG - FCI-Standard Nr. 369 - illustrated



BREED STANDARD

Body: The height at withers is slightly higher than the loins

Top line: as straight as possible

Withers: Length of back measured from the withers to the root of tail corresponds to the height at withers

Back: short and strong

Loin: viewed from above they are only slightly narrower than the chest

Croup: slightly sloping

Chest: depth of chest reaches down to the elbows and corresponds ideally at a ratio of 1/2 to the height at the withers. Ribs rounded and thorax spacious

Underline and belly: belly moderately tucked up



Faults:



too high loin section



back not firm enough

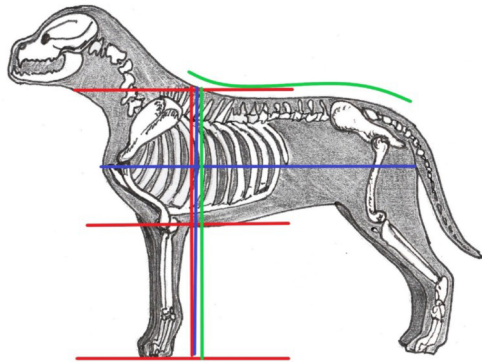


raised back



too superscripted

BREED STANDARD

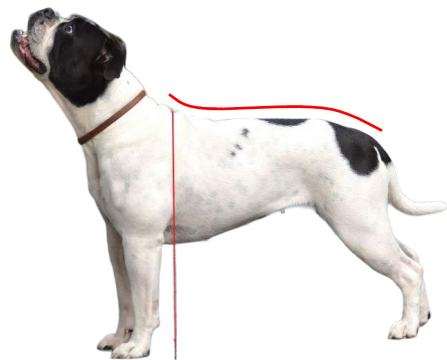
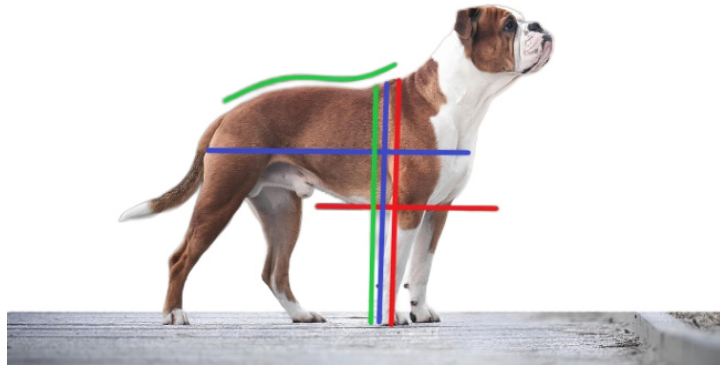


WICHTIGE PROPORTIONEN:

Widerristhöhe: Brusttiefe 2:1

Widerristhöhe: Körperlänge 1:1.2

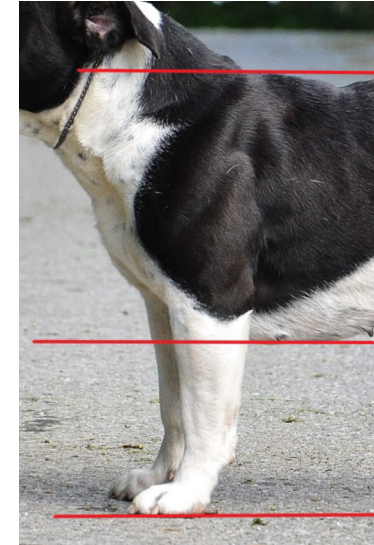
Widerristhöhe: Länge von Widerrist bis Rutenansatz 1:1



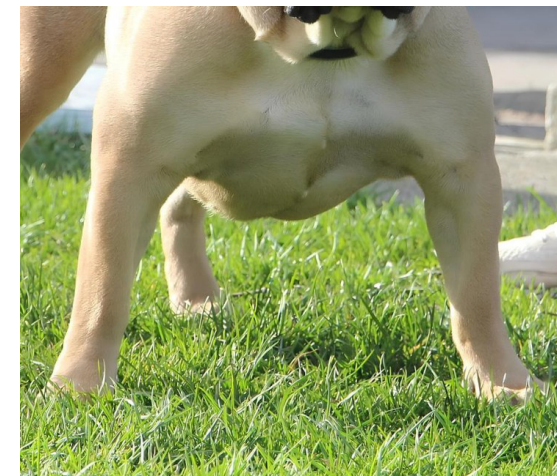
Very good proportions



FAULTS - SEVER FAULTS - DISQUALIFYING FAULTS



too low to ground



barrel-shaped thorax, elbows pointed outwards

BREED STANDARD

Tail: set low, strong; thick at the root and tapering off continuously, thickly coated but free of fringe. Ideally it should extend down to the hocks and be either straight or slightly curved. When resting it falls down, during movement raised but never carried in a roll above the back



FAULTS - SEVER FAULTS - DISQUALIFYING FAULTS

Faults: short and/or slightly deformed tail



kinked tail



curled tail



Disqualifying: strongly deformed tail, no tail

CONTINENTAL BULLDOG - FCI-Standard Nr. 369 - illustrated



BREED STANDARD

Forequarters:

General appearance: legs viewed from front straight, very stout and strong

Shoulder: broad, slanting and well muscled. The shoulder blade shall be closely fitting to the thorax

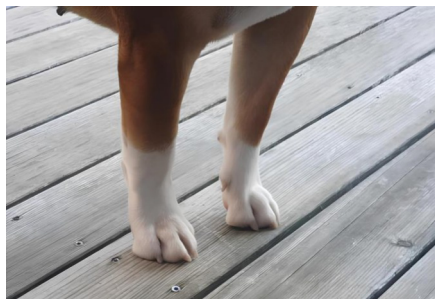
Upper arm: close fitting to the body and with good angulation towards the shoulder blade

Elbows: firmly fitting to the body

Pastern: short and strong, only slightly sloping

Fore feet: thick and compact, neither turning inwards nor outwards

Nails: short and desirably dark



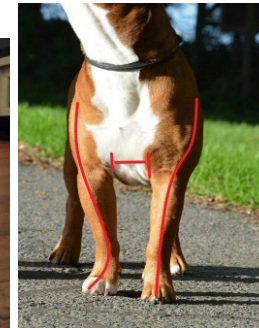
Very well knuckled, padded paws and straight legs

FAULTS - SEVER FAULTS - DISQUALIFYING FAULTS

Faults:



strongly turned outwards (Chippendale)



slightly turned on one side



turned inwards



the paw pads curl



very flat paws

CONTINENTAL BULLDOG - FCI-Standard Nr. 369 - illustrated



BREED STANDARD

Hindquarters:

General appearance: Hindlegs with strong bones and well muscled, parallel if viewed from back

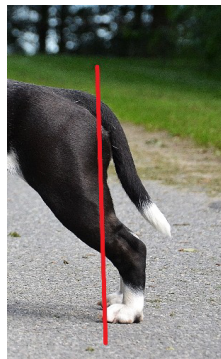
Stifle (knee): well angulated, not turned outwards

Hock joint: well angulated, neither turning inwards, nor outwards

Metatarsus (rear pastern): short and strong

Hind feet: thick and compact, neither turning inwards nor outwards

Nails: short and desirably dark



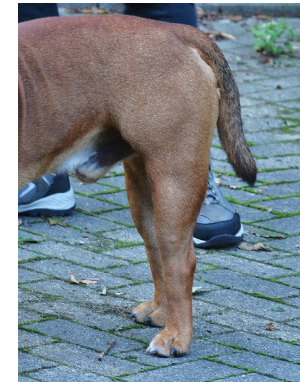
Light-coloured nails
allowed with white
feet



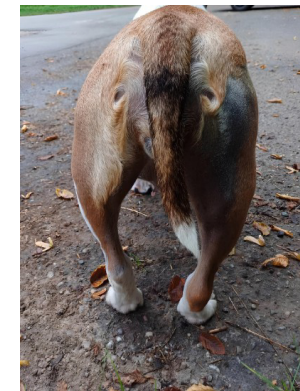
dark nails by
coloured feet

FAULTS - SEVER FAULTS - DISQUALIFYING FAULTS

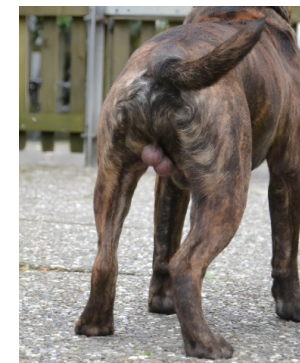
Faults:



too steep



barrel
legged



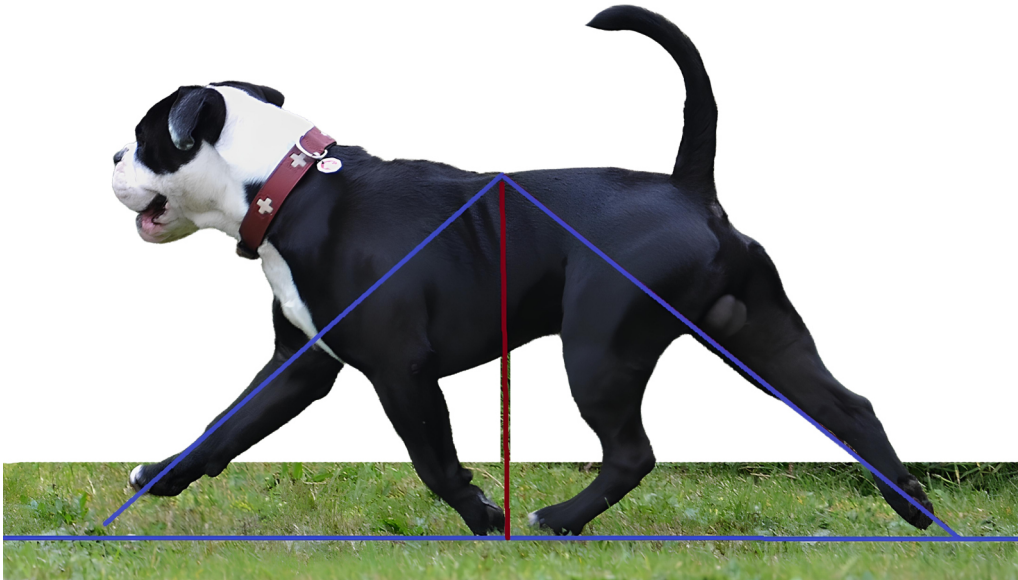
hooged
narrow

CONTINENTAL BULLDOG - FCI-Standard Nr. 369 - illustrated



BREED STANDARD

Gait/movement: regular and fluid movement, good reaching of the forelegs, strong thrust of the hindquarters

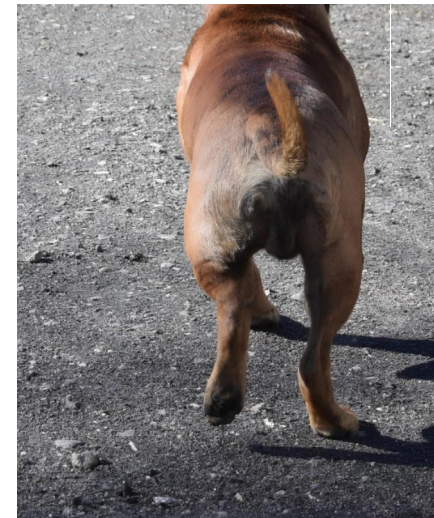


Skin: elastic without wrinkles on body or legs



FAULTS - SEVER FAULTS - DISQUALIFYING FAULTS

Faults: Passing gait or paws dragging over the ground



gait hooked

CONTINENTAL BULLDOG - FCI-Standard Nr. 369 - illustrated



BREED STANDARD

Coat:

Hair: the top hair short, close, flat, glossy, not wiry. The undercoat short, close and of fine texture. The absence of undercoat is permissible

Colours: Fawn (all shades from sand to red), brindle, black; these colours with or without limited, medium or strong white markings, or dark mask are permitted. Also white with or without markings in the permitted colours. A specific spot pattern is not desired.



FAULTS - SEVER FAULTS - DISQUALIFYING FAULTS

Any colors or color combinations other than those described in the standard are not permitted.

BREED STANDARD

Male animal should have two apparently normal testicle fully descended into the scrotum.

Only functionally and clinically healthy dogs, with breed typical conformation, should be used for breeding.

IMPORTANT: These comparisons are to be understood as guidelines, the general impression of a dog is always decisive.

No part of this document may be reproduced or transmitted in any form or by any means, electronic or mechanical, for any purpose, without the express written permission of the copyright owner.

We would like to extend our sincere thanks to Ines Olbricht for the many photographs from her book about the Conti and Thomas Tschanz for the Layout

