

CIMARRON URUGUAYO



Kennel Club Uruguayo - Feb.2017

ORIGIN OF THE BREED

Many of the domestic animals brought to América by the first conquerors ended up living in freedom, becoming wild. These animals never came back to a completely wild stage; all of them kept some of their domestic characteristics. The word “Cimarrón” is used in America to name all wild animal or plant, as the opposite of domestic.

The origin of our “Cimarrón Uruguayo” is uncertain as happens with almost every breed. What we do know is that it comes from crosses among the dogs introduced by the ^{Spanish} and the Portuguese conquerors. Many of these dogs were shiftless; nature was shaping capriciously the stock with these crossings, until reaching a definite type: our CIMARRON URUGUAYO. This same **natural selection** was responsible for the survival of only the strongest, the slyest, the most apt.



BRIEF BACKGROUND

They grew to become very well adapted to the surroundings. Having plenty of food and no natural depredators, the Cimarron bred in great numbers, becoming a real danger for livestock and even for people, according to some historical documents. This was the reason for some large killings ordered and encouraged by the authorities of the time (end of XVIII and beginning of XIX century). The tales talk about tens thousands roaming the country.

However, in spite of that, "...a great number of bitches with their whelps reached the woods of the Olimar River, the Otazo hills and the Cerros Largos (Long Hills)..." Many ranchers of Cerro Largo, knowing the CIMARRON URUGUAYO virtues at cattle work and property defense, started some selective work, preserving them from cross breeding. Thanks to this arduous work, today we are able to enjoy their qualities in Uruguay. We are happy dog lovers of the rest of the world are doing it so.





1969 - Frist time Cimarrones have been presented at a KCU general all breed Show.

Judge : Julio Vazquez
Exhibitors: Sra. Elvira S. de Pecoste - Sr. Silvera

Octubre 12, 1988 the SCCU was founded.



In December 2004 in Montevideo with pride and excitement, more than 130 cimarrones from all over the country were presented to FCI authorities.

(Mr. Hans Müller, Dr. Wilhelm Brass, Mr. Yves DeClerq, Mr. Miguel A. Martinez, Dr. Margarita Durán, Mr. Jorge Nallem)





2005 - In the frame of the World Dog Show in Argentina, under the invitation of the Federation Cinologica Argentina

First specialty show outside Uruguay was organized with more than twenty dogs, judged by Adrián Landarte.

Was a great opportunity to show our breed to the world. The event was attended with many enthusiast people, international press and the dogs were inspected by

Prof. Raymond Tirquet (Standard Commission president) and Miguel A. Martinez (Am&Caribbean President).





STANDARD OF THE BREED



1988

First official standard was approved and published by the Kennel Club Uruguayo

February 21, 2006

The Cimarron Uruguayo was recognized on a provisional basis by FCI with Standard N°353

March 11, 2014

New revision of the Standard was approved by Standard and Scientific commissions and is current FCI official valid Standard.



General Appearance

Medium sized dog of dogue type, strong, compact, with good bone, well muscled and agile.




Temperament / Behavior



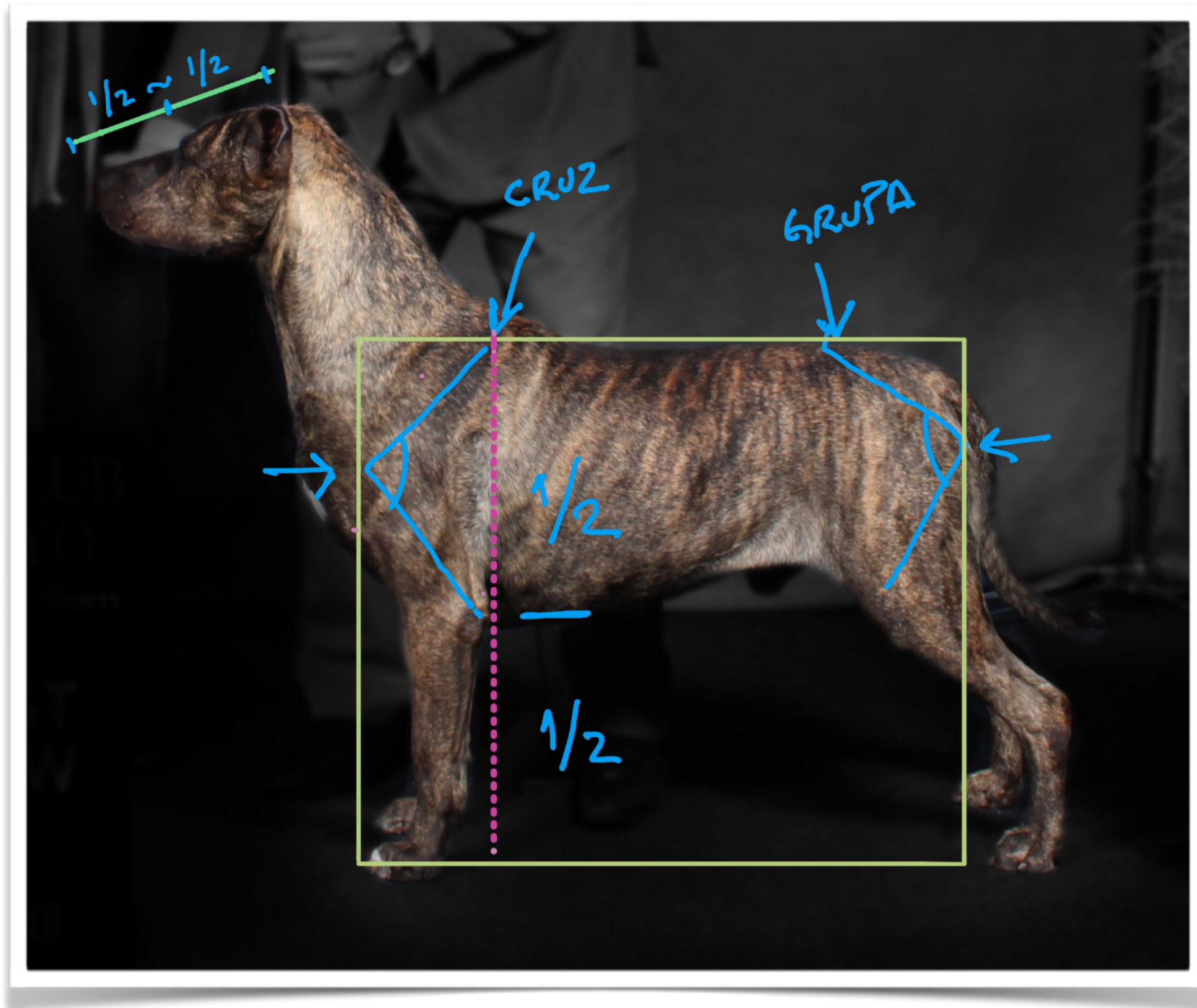
Balanced, intelligent and of great courage

UTILIZATION

A photograph showing a light-colored dog, likely a Uruguayan Mastiff, standing in a grassy field. The dog is facing away from the camera, looking towards a group of black and white cows. The cows are scattered across the field, some grazing. The background shows a vast, open landscape with trees and a clear sky.

It is a very versatile dog, in Uruguay in the cities mainly used as a family dog and guard, in the field as a working dog with cattle and sheep, also used as a big game hunting dog especially for wild boars

Important Proportions



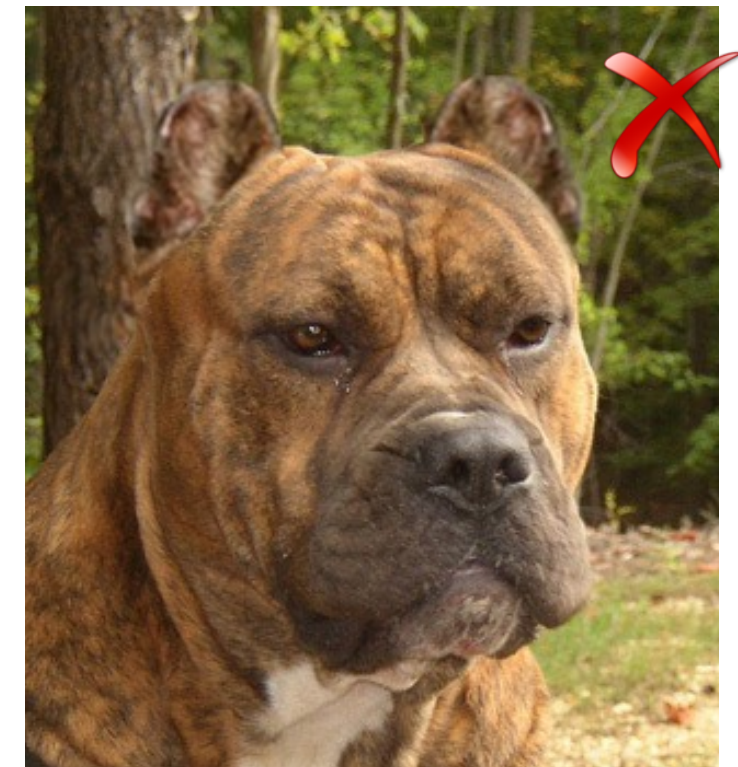
HEAD



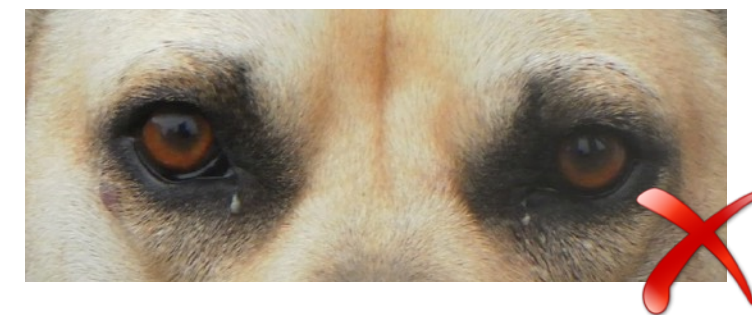
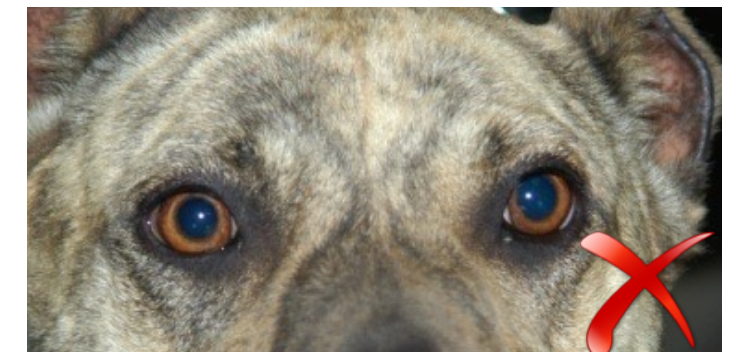
Muzzle powerful. Medium width, slightly shorter than skull.
Skull wider than long. Occiput slightly pronounced.



STOP : Moderate **NOSE** : Broad, black or in accordance with coat color.



LIPS: Upper lip covers lower lip but is not hanging **JAWS/TEETH:** Jaws strong, powerful. Teeth strong, well aligned, preferably complete bite, allowing absence of PM1. Scissor bite. **CHEEKS** Well developed, not bulging.



EYES: Medium size, almond shape. Any shade of brown or in accordance with coat color, the darker the better. Eyelids tightly fitting eyeball and fully pigmented.



EARS: Medium size, set neither too high nor too low, triangular, drooping but not close to the cheeks or in rose shape. Traditionally cropped in country of origin.



NECK Strong, well muscled, not too long.

TOP LINE Level or with a slight depression behind the withers.

WITHERS: Well defined.

LOIN short, strong, slightly arched.

CRUOP of good length, broad, sloping at 30 on the horizontal.

RIBS well sprung, but not barrel shaped.



Chest deep, reaching at least to the elbow.
Broad and well developed.

Forechest well defined.

Shoulder well laid back.

Upper arm same length as the shoulder blade.



Elbow neither turned in nor out.

Metacarpus seen from the side, slightly sloping.

Front feet oval shaped, well-knit toes. With strong pads

Hindquarters well muscled and powerful, seen from behind straight and parallel.

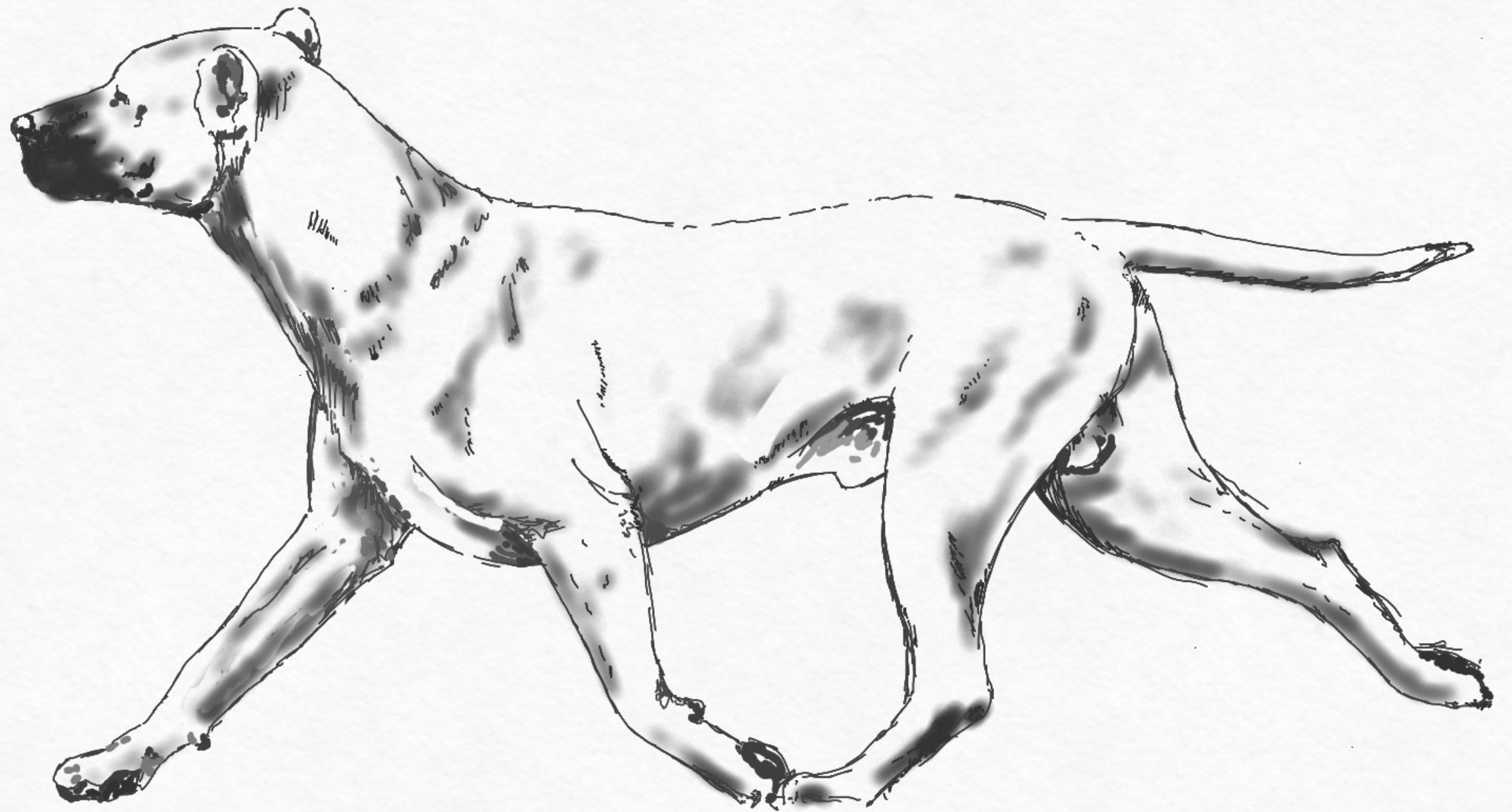
Thigh well developed

Metatarsus firm, of medium length.



Hind feet cat feet, strong pads.

Tail thick, medium set. Reaching to the hock. At rest carried low. In motion carried horizontally or slightly upward.



GAIT- MOVEMENT

EFFORTLESS. WITH GOOD REACH IN FRONT AND GOOD DRIVE BEHIND. IN MOVEMENT, SEEN FROM THE FRONT AND FROM BEHIND, THE LEGS ARE PARALLEL, SINGLE TRACKING WHEN SPEED INCREASES.



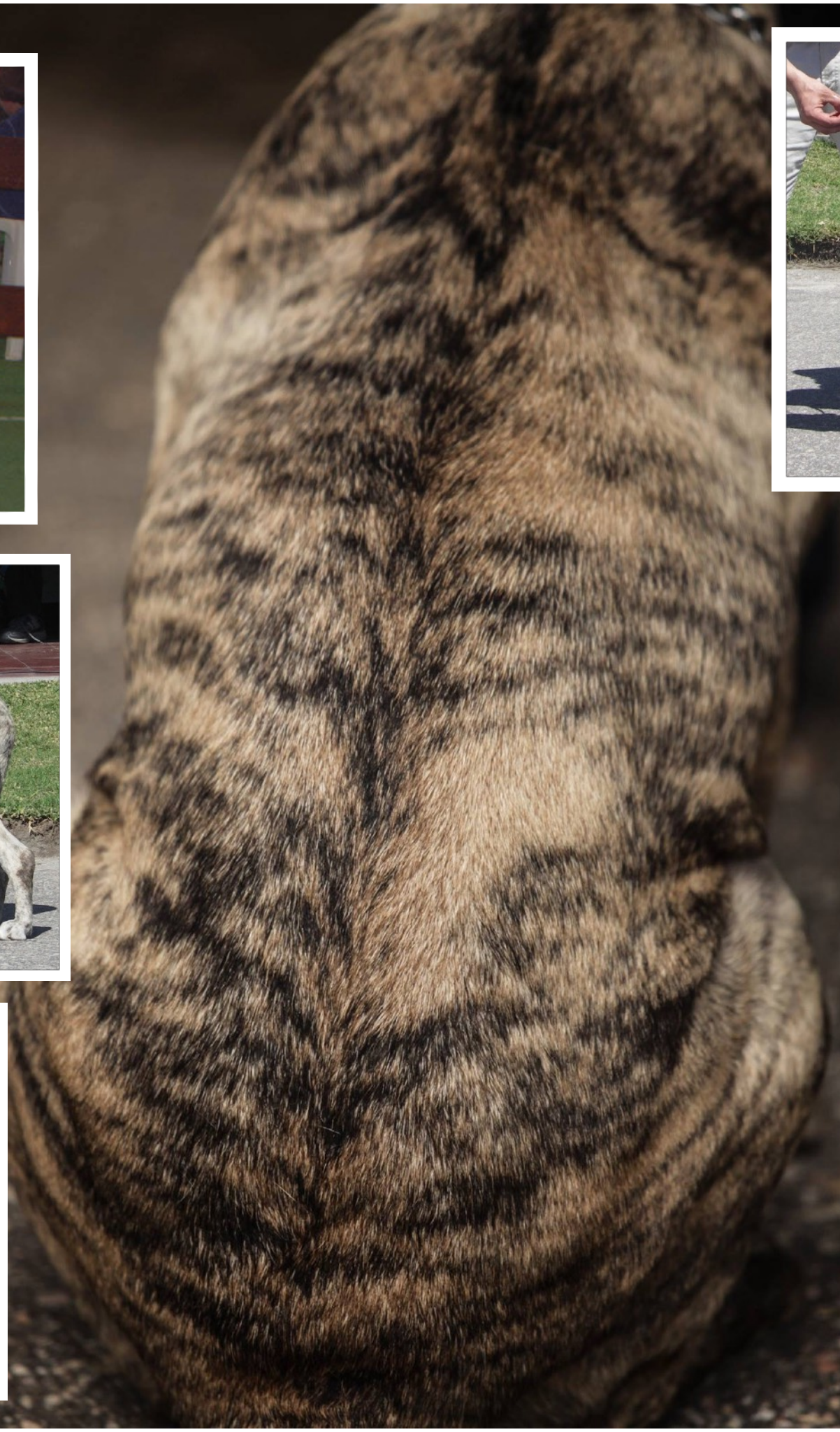
Skin thick and supple. **Coat**, short, smooth, close to the body, with undercoat.

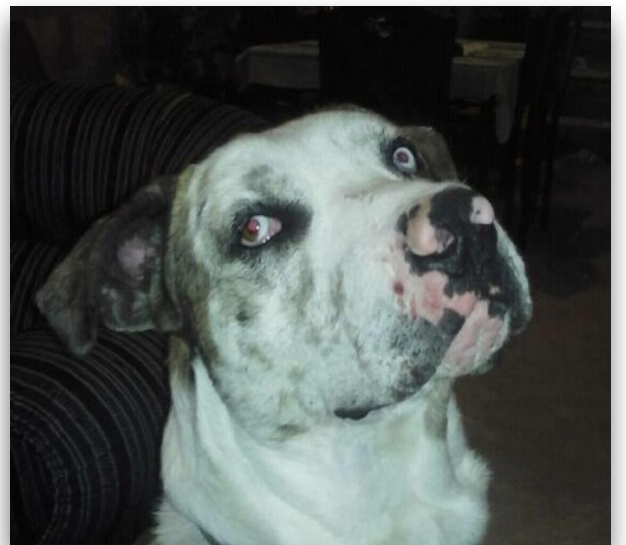
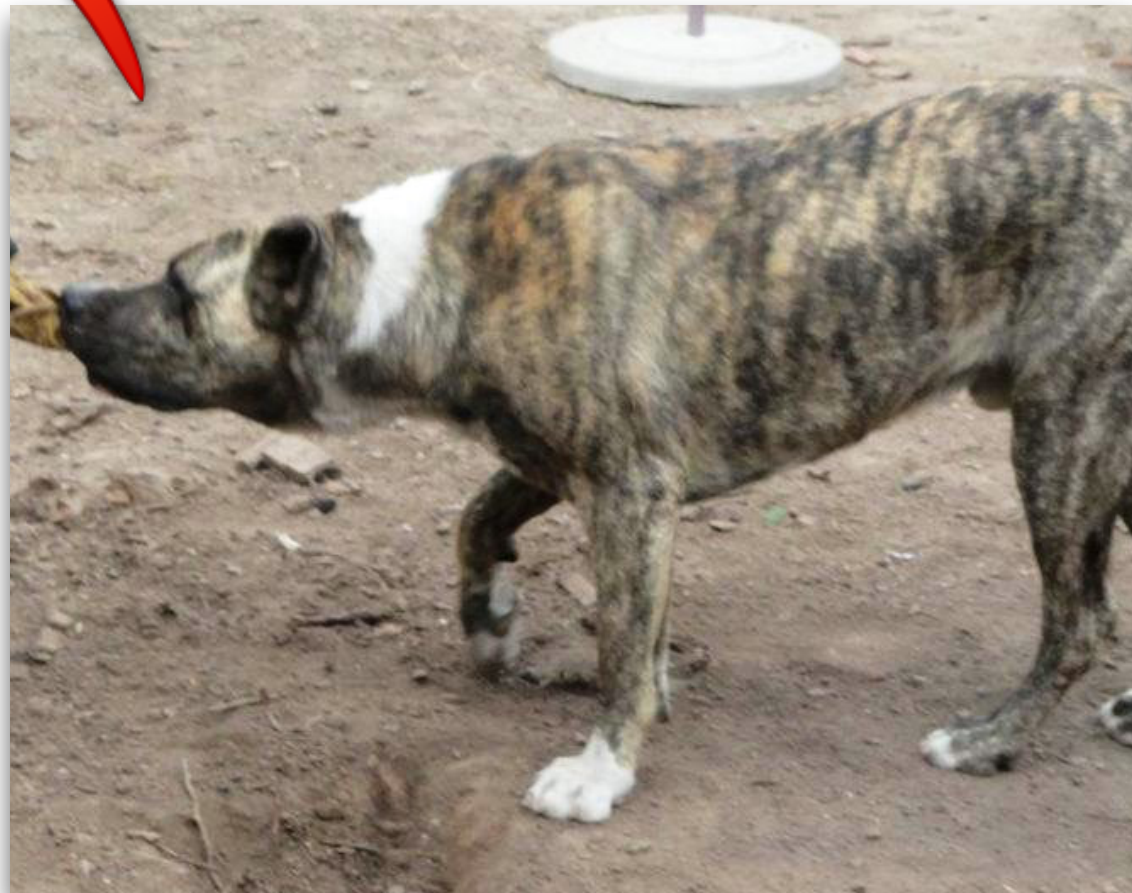


Brindle or all shades of fawn, the latter may have black shadings. Also bluish brindle and bluish fawn, all with or without mask.

White marks are allowed in the following places: under jaw, the throat, fore chest, abdomen and lower part of legs not exceeding up the wrist or half way up the metatarsus







SIZE AND WEIGHT

HIGHT AT THE WITHERS

Males 58-61 (2 tolerance)

Females 55-58 (2 tolerance)

WEIGHT

Males 38-45kg

Females 33-40kg



FAULTS

- Any departure from the foregoing points should be considered a fault and the seriousness with which the fault should be regarded should be in exact proportion to its degree and its effect upon health and welfare of the dog.
- Lips excessively pendulous at corners.
- Excessive dewlap
- Cheeks too prominent.



SEVERE FAULTS



- White markings with the exception of those mentioned.
- Clear departure from the important proportions.
- Absence of sexual dimorphism
- Size under or over stipulated height (including tolerance)
- Sloping topline.

DISQUALIFYING FAULTS

- Aggressive or overly shy dogs
- Any dog clearly showing physical or behavioral abnormalities shall be disqualified.
- Clear lack of type
- Undershot
- Overshot
- Unpigmented nose.
- Long hair
- Genetic brown (chocolate) coat color, in fawns or brindles with nose and gums brown and light eyes.
- Any color not mentioned.





OTHER ACTIVITIES



OTHER ACTIVITIES



CIMARRON URUGUAYO THE NATIONAL HERITAGE DOG





The Cimarron is the only Uruguayan breed and has a strong roots in the population and its tradition.

Is a symbol of our country since the time of independence, always with our national hero Gral. Jose G Artigas.

The Uruguayan Cimarron accompany the mounted cavalry of the body of the blandengues of Artigas in all the party and official parades.

More presence of the breed in different ways.
(Monuments, sculptures, paints, poems, songs, postage stamp, etc.)



New monument
recently inaugurated in
Montevideo
representing the
windows to the future
watched by cimarrones
(By very well know artist
Iturria)

Telling us about the
importance the breed
has for uruguayans.





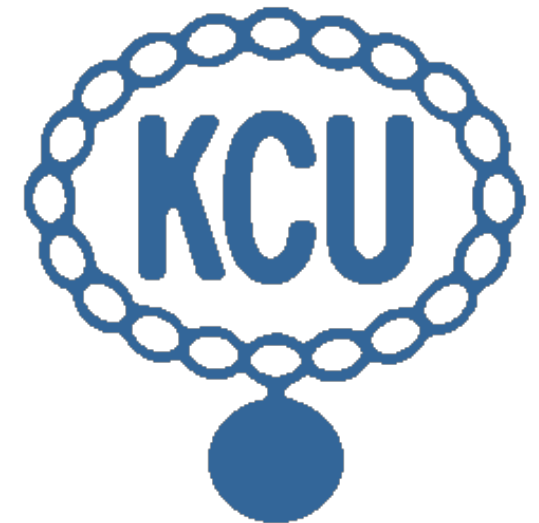
Igor - Famous theatre Cimarron dog actor on stage

Batu - The mascot of the southeamerican sub20 soccer championship









Any other extra information or clarification
please contact us to info@kcu.com.uy